

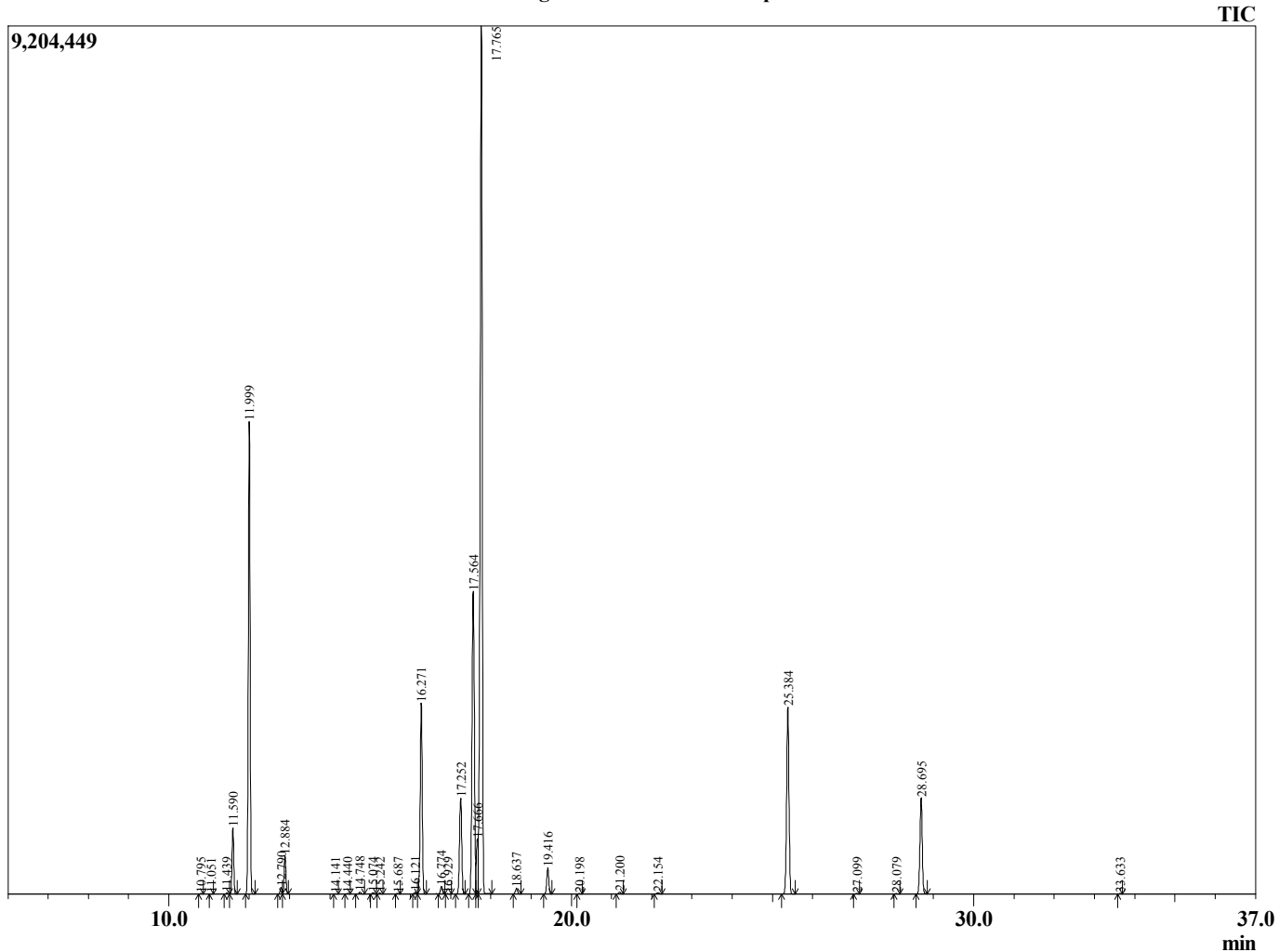
Sample Information

Sample Type : Essential Oil
 Sample Name : Cinnamomum camphora :
 Injection Volume : 0.10

Camphor White
 Lot# CHK17-KW
 Country: China



Chromatogram Cinnamomum camphora



R.Time	Name	Area%
10.795	2,6-Dimethyl-4-octene	0.03
11.051	Unidentified	0.01
11.439	Tricyclene	0.04
11.590	alpha-Thujene	2.27
11.999	alpha-Pinene	16.71
12.790	alpha-Fenchene	0.23
12.884	Camphene	1.39
14.141	Sabinene	0.02
14.440	beta-Pinene	0.02
14.748	6-Methyl hept-5-en-2-one	0.09
15.074	Myrcene	0.06
15.242	Sulcatol	0.04
15.687	Unidentified	0.03
16.121	alpha-Phellandrene	0.06
16.271	delta-3-Carene	7.58
16.774	alpha-Terpinene	0.30
16.929	ortho-Cymene	0.01
17.252	para-Cymene	4.00
17.564	Limonene	13.63
17.666	beta-Phellandrene	1.77
17.765	1,8-Cineole	37.19
18.637	trans-beta-Ocimene	0.24
19.416	gamma-Terpinene	1.08
20.198	trans-Sabinene hydrate	0.02
21.200	Terpinolene	0.09
22.154	Linalool	0.07
25.384	Camphor	8.50
27.099	Borneol	0.02
28.079	Cryptone	0.02
28.695	alpha-Terpineol	4.45
33.633	Geranial	0.01
		100.00